

## Section 5: Accessible Transfer System with Support Grab Rail Installation 500890

- Install Support Grab Rail by removing pipe covers on EZ Port MAX and securing the base of the support grab rail with four (4) bolts.
- Secure Transfer Bench with two (2) bolts into the tee-nuts on the EZ Dock dock section and two (2) lag bolts directly into EZ Dock couplers.
- After the transfer bench and support grab rail have been mounted the bench boards need to slid out to ensure that they are level and rest of the opposing bench tray support bar on the support grab handrail. The height of the bench can be adjusted (see figure 15) by loosening and sliding the bench unit up or down. Once the bench is in the desired position tighten the height adjustment nuts. The bench trays should slide out and rest on the grab support rail easily.

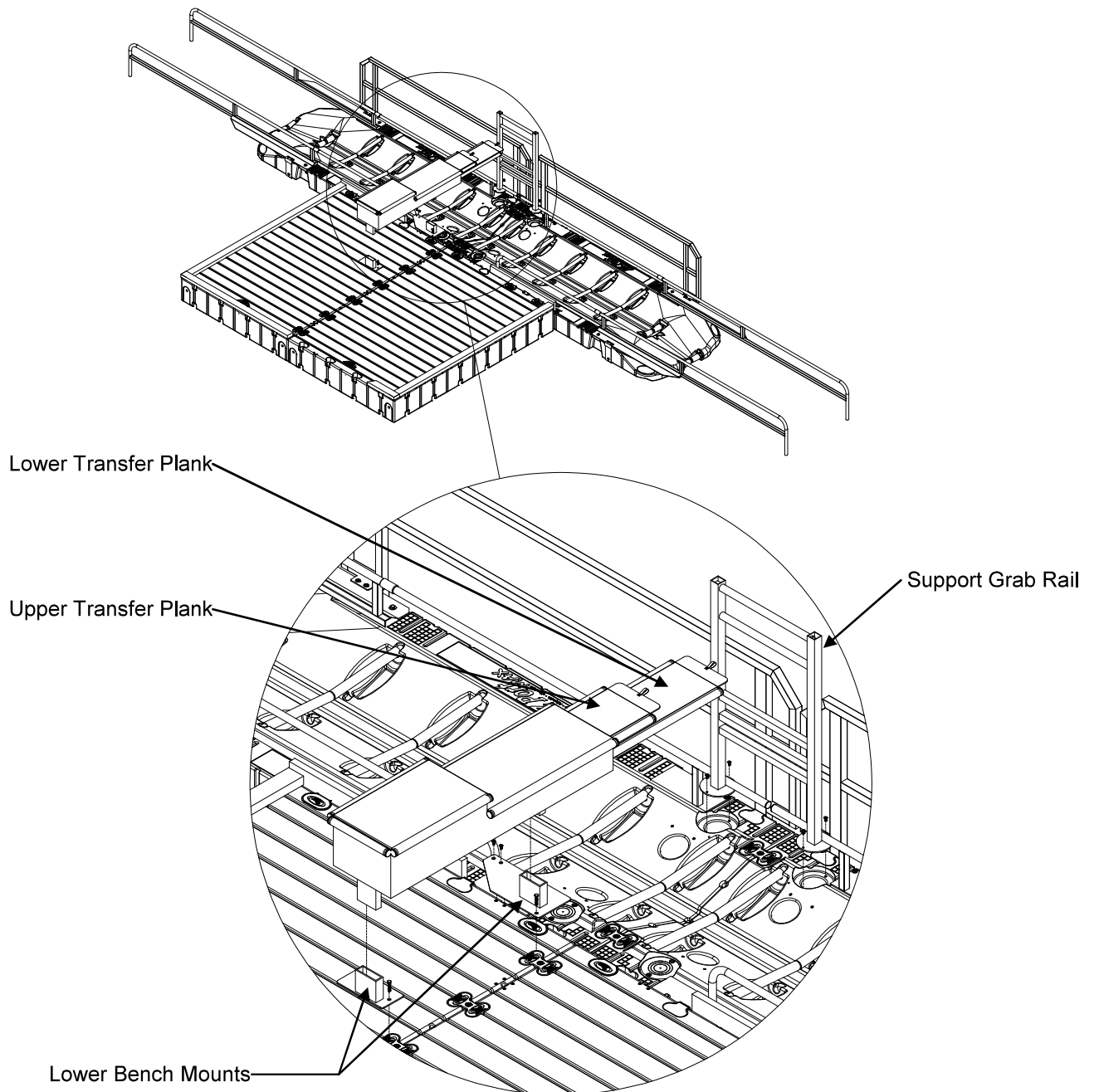


Figure 14

## Section 5a: Accessible Transfer System Adjustments

The EZ Dock Accessible Transfer System has numerous way to adjust the height of the bench to satisfy virtually any application. The entire bench can adjust vertically by simply loosening two bolts (Figure 15). Figure 16 utilizes the upper transfer plank for taller freeboard watercrafts such as a canoe. Figure 17 utilizes the lower transfer plank for shorter freeboard watercrafts such as a kayak.

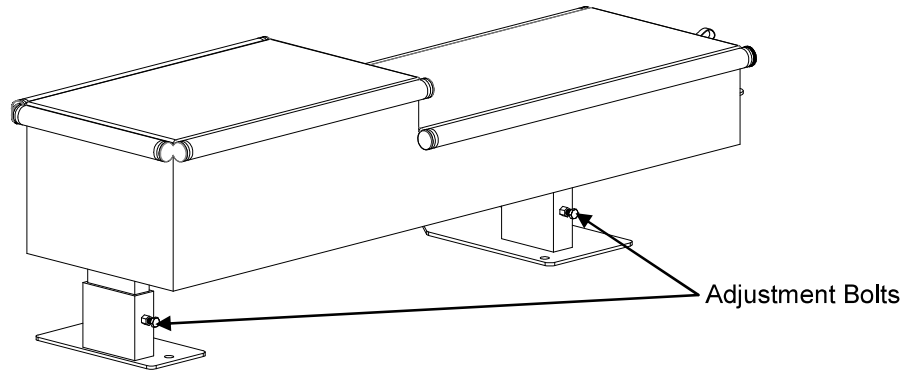


Figure 15

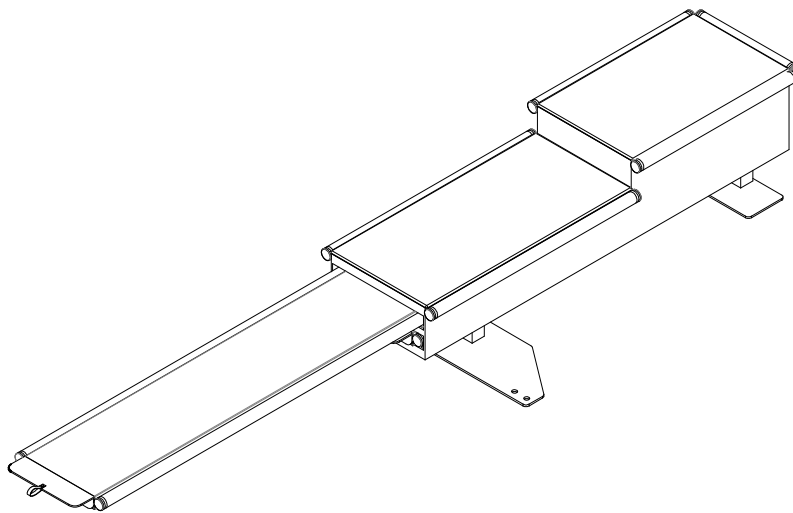


Figure 16

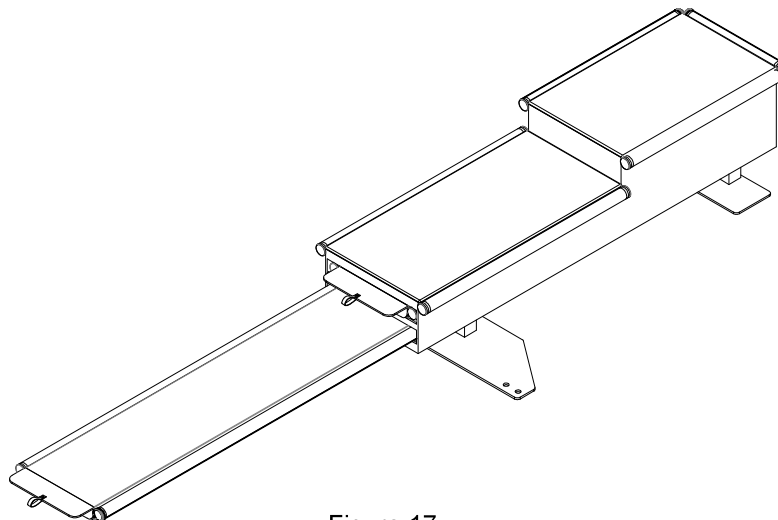


Figure 17